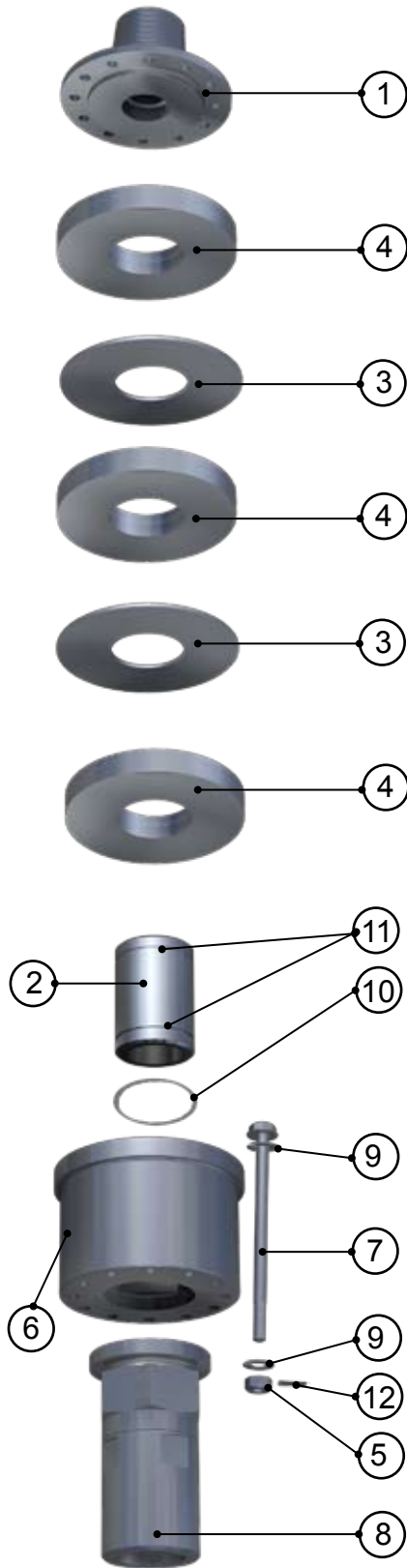




**Bulroc Out Of The Hole
18"-24" Shock Absorber**

Bulroc Out Of The Hole Shock Absorber for use with 18" & 24" Hammers



Maintenance Instructions for Out of the Hole Shock Absorbers

The Bulroc HD range of Shock Absorbers should be dismantled and the components inspected every 500 hours of operation or every 6 months of intermittent operation. Note at this time all Rubber 'O' Rings should be replaced.

Remove the nuts (5), steel washers (9) and pins (7) first before pulling the top connector (1) out of the main body (6) which in turn removes all the internal parts for checking.

To re-assemble, insert the bottom connector (8) into the main body (6) first (after you have replaced the 'O' Ring in the body bore) then insert the connector tube (2) into the bottom connector (8) once the connector tube (2) is inside, insert the steel washers (3) and rubber buffers (4) to form rubber/steel/rubber layers before inserting the top connector (1). Once the unit is assembled the nuts (5) and pins (7) are inserted. These should then be tightened up 1 O'Clock, 6 O'clock, then 3 O'clock, 9 O'clock, 2 O'clock, 7 O'clock and so on to make sure the parts are tightened true and square. Finally ensure seloc pins (12) and washers (9) are fitted in position.

Note : Item 4 (Buffers) should be replaced when worn to 0.875" / 22.23mm thick and item 10 should be replaced whenever the unit is split open.

*Alternate connections such as Hexagon 190 or to flange available on request.

Size	Imperial	Metric
Overall Length	27.5"	699mm
Outside Diameter	19.5"	495mm
Net Weight	990 lbs	449 Kgs

Components		Part Code
1	Top Connector 8 5/8" API Reg Pin	OTHSA0882M
2	Connector Tube	OTHSA06
3	Steel Washers (2)	OTHSA04
4	Rubber Buffers (3)	OTHSA05
5	Nuts (12)	OTHSA07
6	Body	OTHSA01
7	Pins (12)	OTHSA03
8	Bottom Connector 8 5/8" API Reg Box	OTHSA0282F
9	Washers (24)	OTHSA08
10	Body 'O' Ring	OTHSA09
11	'O' Rings (2)	OTHSA10
12	Seloc Pins (12)	OTHSA11
	Complete	OTHSA182401