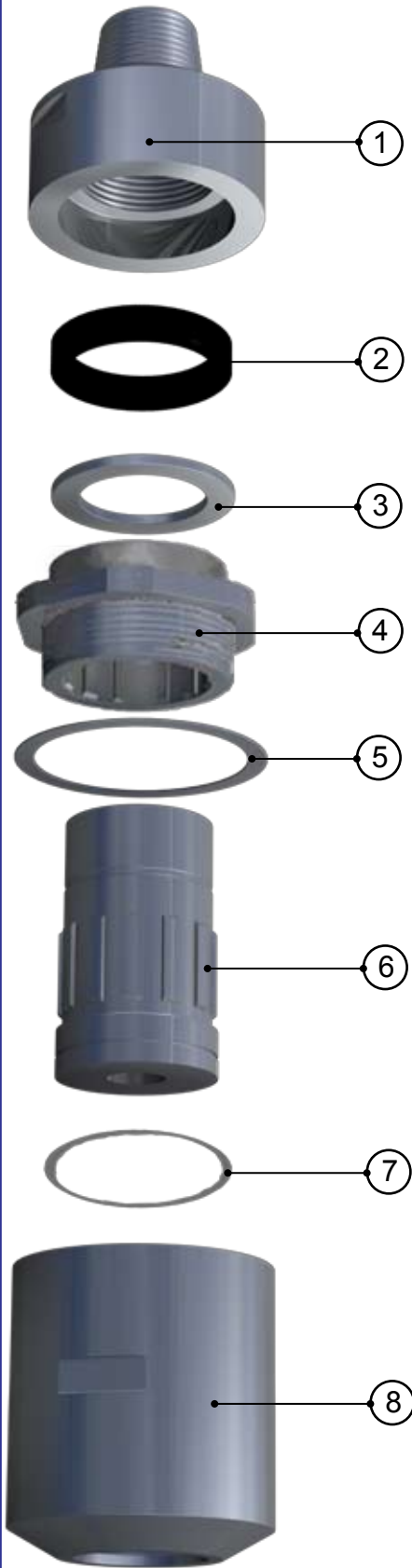




Bulroc 18" - 24"
In The Hole Shock Absorber

Bulroc In The Hole Shock Absorber for use with 18" & 24" Hammers



Maintenance instructions for In the Hole Shock Absorber

The Bulroc HD range of Shock Absorbers should be dismantled and the components inspected every 500 hours of operation or every 6 months of intermittent operation.

First unscrew the Top Connector from the Bottom Connector by locking the Bottom Connector with a suitable spanner against a solid base and split the Top Connector at the spanner flats. Remove and inspect the Buffer. If this is showing any signs of wear or fatigue, it must be replaced. Now unscrew the Splined Nut from the Bottom Connector and remove the Shaft. Inspect the 'O' Ring and replace if necessary.

Note: Should the shockabsorber be difficult to break open, then cut out the Breakout Washer (item no.5) with a pencil grinder or similar. This should facilitate easier opening of the shockabsorber.

Important

It is inevitable that there will be progressive wear between the Bottom Connector shaft and the Nut. When this wear pattern exceeds 2mm in either component, it is recommended that this component be replaced since excessive wear will eventually lead to failure of the Bottom Connector shaft or thread with consequent loss of hammer and bit. Clean all the components and then coat the splines on both the Shaft and the Nut with good quality grease. Now, lower the Nut and shaft into the Bottom connector and tighten the Nut down. Then put the Thrust Washer over the Shaft so it sits on the Nut face, slide the Buffer down the Shaft up to the Washer face. Grease the internal top connector thread and screw down onto the Shaft. Using suitable spanners, torque up fully.

Size	Imperial	Metric
Overall Length	28"	711 mm
Outside Diameter	16"	406 mm
Net Weight	1316 lbs	598 Kgs

Components		
1	Top Connector 8 5/8" API Reg Pin	SA18ST0882M
2	Buffer	SA18ST05
3	Thrust Washer	SA18ST04
4	Nut	SA18ST01
5	Breakout Washer	SA18ST25
6	Shaft	SA18ST02
7	Shaft 'O' Ring	SA18ST03
8	Bottom Connector 8 5/8" API Reg Box	SA18ST0982F
	Complete	SA18ST82MF