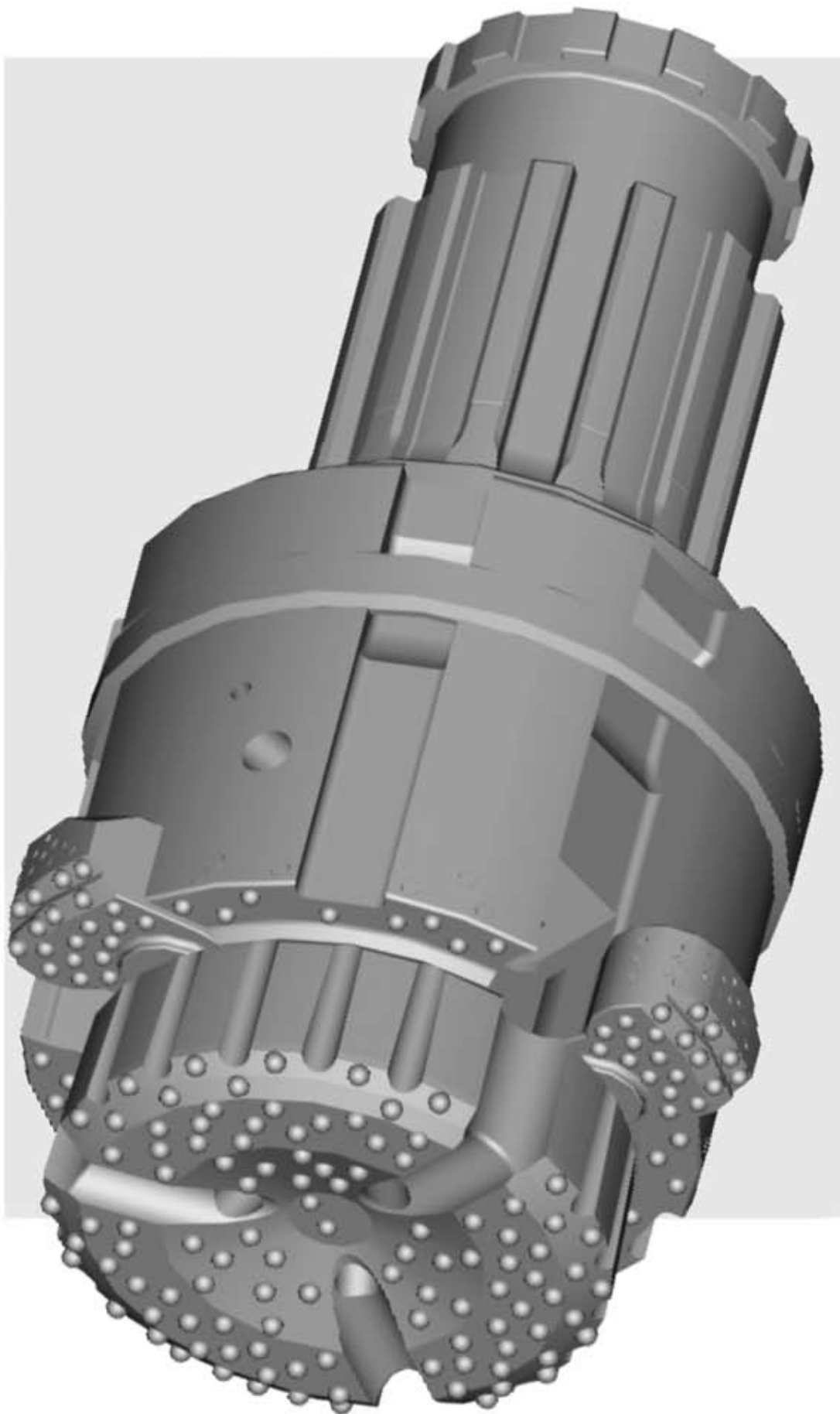


Bulrooc



BULROC CDS 610

CONCENTRIC OVERBURDEN DRILLING SYSTEM

Drilled Hole Dia 695mm

Casing Size 659mm O/D x 633mm I/D

CDS 610

Concentric Overburden Drilling System

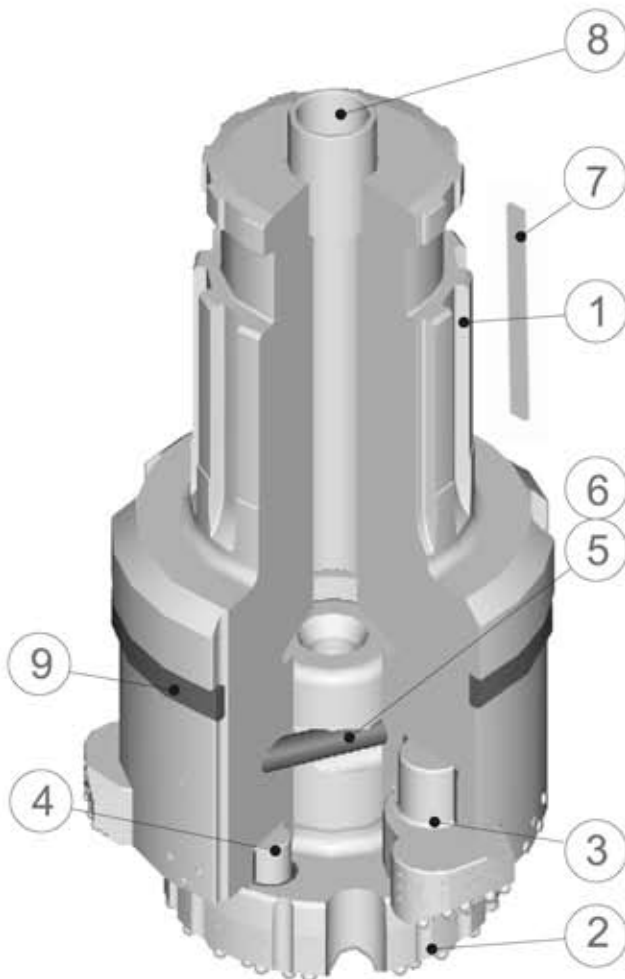
The CDS610 is a Concentric Overburden Drilling System designed for the continuous casing of a 695mm diameter hole, through loose overburden materials down into solid bedrock.

The CDS610 comprises the Driver, which is available for drilling with 18" and 24" hammers, together with a replaceable Pilot Bit and 3 replaceable Segments. The current CDS models have now the option to be supplied with a replaceable Drive Shoulder.

At the start of the drilling operation, the Segments are in the closed position to allow the System to pass through the casing shoe. When drilling commences, the Segments swing out to drill a hole of 695mm.

The CDS610 can be withdrawn through the casing by rotating the System anti clockwise against the solid base of the hole. If there is no solid base, the System can be closed by pulling up against the casing shoe and rotating anti clockwise.

COMPONENT PARTS



Ref	Description	Part No.
1	Driver (N180)	CDS610DH180
1	Driver (N240)	CDS610DH240
2	Pilot Bit	CDS610BBCCHS
3	Segments (3)	IPSEG02
4	Drive Pins (3)	CDS610DP
5	Retaining Pins (2)	CDS610RP
6	Retaining Pin Circlips (2)	CDS610CP
7	Drive Plates (N180)	DP180
7	Drive Plates (N240)	DP240
8	Footvalve (N180)	BBF180
8	Footvalve (N240)	BBF240
9	Drive Ring	CDS610DRR
	Complete System (N180)	CDS610180
	Complete System (N240)	CDS610240

SPECIFICATION

Description	Metric
Major Body Diameter	630mm
Length (less footvalve)	1180mm
System Closed	611mm
System Open	695mm
Casing Size	659 O/D x 633 I/D
Total Weight N180 Shank	1790kg